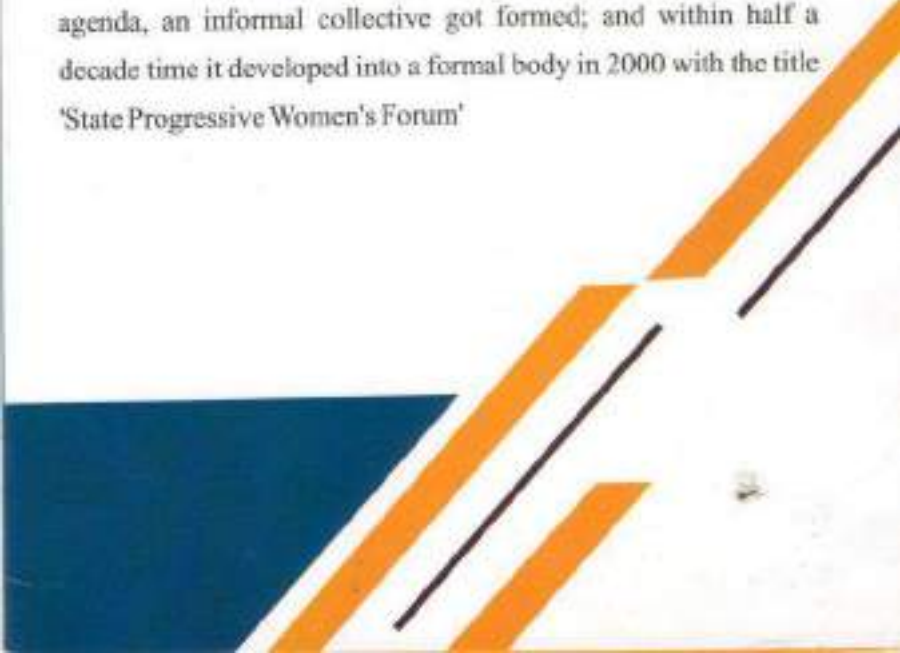




STATE PROGRESSIVE WOMEN'S FORUM



A group of active women, involved in right-based and service-based socio-development activities, came closer during the various encounters and exercises with a good bit of sharing. On the basis of like mindedness on issues and action agenda, an informal collective got formed; and within half a decade time it developed into a formal body in 2000 with the title 'State Progressive Women's Forum'



VISION

A world where women realize their full potential to live with dignity and freedom and contributing to social cause.

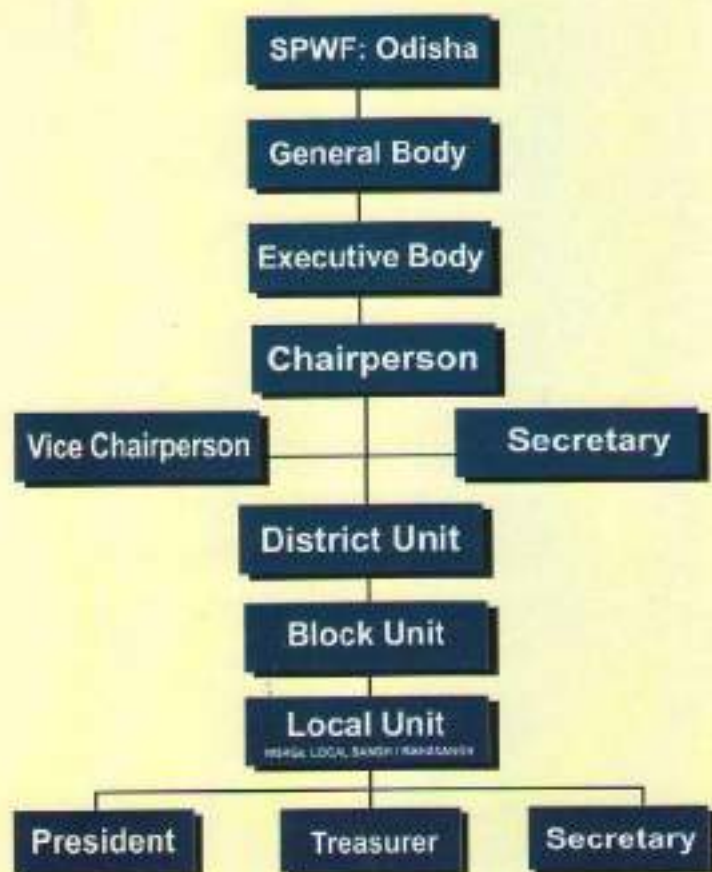
MISSION

- To serve as an umbrella guarding the interest of all women groups with about 23000 self help groups all over the state having membership strength around 2,76,000.
- To facilitate formulation and implementation of state policies that are equitable, accountable and effective in enabling realization of women's rights
- To act as a resource hub that uses and shares information, data and guidance for use of members and supporters.

The Working Team & Structures

The SPWF's membership & management is of federal nature & structure. It has a state level body and its district units that comprises of local/regional collectives of women's groups (under titles like Sangha/ Mahasangh(s)). There is all scope of expansion of the organizing & administrative structure as and when required.

ORGANOGRAM



Objectives

- ⇒ To create an alliance of women's organizations, WSHGs & their collectives working with special focus on women and girl child.
- ⇒ To influence legislation towards enhancing constitutional rights of women and children.
- ⇒ To promote meaningful participation of women in all social, political and economic spheres.
- ⇒ To create opportunity and facilitate a decent life and livelihood through development programs and welfare schemes.

Our Approach

- ⇒ Holistic & integrated development
- ⇒ Gender equity, a must for community
- ⇒ Development; rights / entitlements as citizens & nationals : enjoyed & accessed by all.
- ⇒ Empowerment through awareness and skill building.
- ⇒ Participation in Collectives.

SOME PROCESSES & HUMBLE ACHIEVEMENTS OF SPWF

in cases/matters of Domestic Violence, Sexual Abuse etc.



Response

Since inception SPWF responded quite sharply in various issues related to women and children.

Approach:-

- Rushing to the spot
- Contacting members, sympathizers to reach for rescue/relief.
- Contacting police & medical team, civil administration and media.
- Supporting or filing police cases (based on situation/need).
- Forming Pressure Group (against inaction) and collaborating with CSOs.
- Filing petitions with NHRC /SHRC and other statutory (legal) bodies based on the gravity of the case.

Achievement

- ☆ About 3 lakh women motivated to get organized as local micro-groups as SHGs/ Mahila Mandal/ Mahila Sanghas in all the 30 districts of the State of Odisha.
- ☆ The WSHGs, about 27,000 in number, further grouped under 150 + Sanghas/ Mahasanghas, are educated & made aware of the basic rights of women & children through extensive local, regional and district level educative workshops/ seminars and conventions.
- ☆ Our women, as sincere members of their respective SHGs, are involved in some income generating activities / micro enterprises with a reasonable earning support to their families.
- ☆ About 3000 cases/ complains of domestic violence/ dispute (in most cases young women being the victim) have been taken up at the first instance. [To process adopted: involving field/ spot visit, case study, primary appraisal with the community elders, in-situ and technical counseling, seeking & availing police and / or local administration support. Moving further (in cases as required) legal complains / case-tracking, creating media pressure etc.]
- ☆ About 200 marriages of helpless girls organized & solemnized (almost a half of it being inter-caste marriages).
- ☆ About 400 cases of sexual harassment & out raging of modesty caused to women have been handled with support from women groups, human rights activists, police, media and legal counselors.
- ☆ About 60 cases of severe and fatal physical assault like bride burning, acid attack, sex racket, trafficking have been handled at crime spots, medical hospitals with support from police, legal counselors and doctors.
- ☆ By now 3000 cases of domestic violence & sexual abuse have been investigated/ cancelled/ amicably resolved or legally pursued.
- ☆ Socio-cultural services, exposing fraud Godmen and thereby saving lakhs of innocent believers from being exploited (in the guise of spiritualism).



DOCUMENTATION & PUBLICATION

Towards enhancing keen awareness and education of women in general and thereby capacitating them for better, the SPWF publishes a monthly magazine titled 'AME SAHEL'. Occasion-based and theme-specific booklets, leaflets are also published and circulated.

SPECIAL TEAMS / OUTFITS

- ☆ Specially trained rescue & relief teams comprising of young men & young women.
- ☆ Troupes of young women with training in cultural performance (music, folk song, street play and stage-shows)
- ☆ Team of Consultants / Specialists on women, children issues.

DEVELOPMENT INTERVENTION

- Resource-cum-Production Centers promoted at Gop (Puri), Rasalpur (Jajpur), Patalipanka (Kendrapada), Bhimpur (Bhubaneswar), G.Udgygia (Kondhamal) & Kantamal (Boudh)
- Productive Skill Orientation & training rounds conducted for & with 220 women groups.
- Campaign arresting child labour and against child abuse, exploitation.
- Local Vigilance Groups with SPWF members.
- Facilitating medical & financial support to child & women victims of abuse; and also facilitating their socio - economic rehabilitation.





CONTACT ADD.:

Airport, VIP Road, Aerodrome Area

Plot no. 857/1998

B.O.: Bhimpur, Plot no. 121

Bhubaneswar, Pin : 751 020.

B.O.: MIV - 5, Madhuban Paradeep, Jagatsingpur

B.O.: Gop, Subamapur, puri, Odisha, India

Contact: +91-9437073571 / 7008129865, Tel/Fax: 0674-2596571

Email: spwf.odisha@gmail.com, Website: www.spwfordisha.org

Bringing Women Together: Empowering them